

CENTRAL MINES RESCUE STATION

POLAND



**HOPE
DIES
LAST**

Prepared by:
Andrzej Kleszcz



CENTRAL MINES RESCUE STATION

POLAND



Central Mine Rescue Station in Bytom providing assistance to more than 30 mining companies (e.g. hard coal, zinc and lead ore, salt).



CENTRAL MINES RESCUE STATION

POLAND

Rescue operation is always an unusual situation, so we must make difficult and risky decisions during rescue of people and mining plants, restoring its security



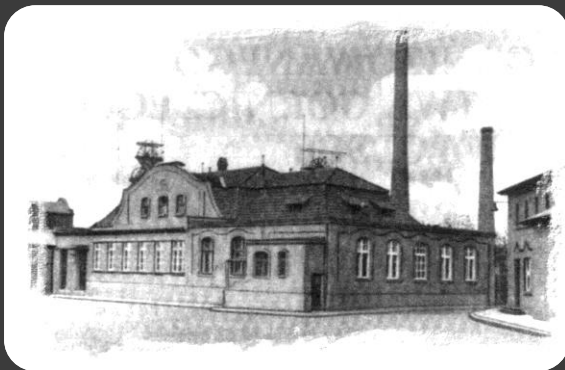
All of rescuers during leading rescue action always have hope that everything will go good and their effort, putting life at risk and health will not be wasted - **Hope Dies Last**



CENTRAL MINES RESCUE STATION

POLAND

The beginning of Mining Rescue in an organized form on present Polish lands is dated at 1907. At that precise moment mine rescue station in Bytom was establish.





CENTRAL MINES RESCUE STATION

POLAND



Mine rescue in Poland operates on the basis of:

- ✓ act passed by the Polish Parliament
(the legislative authority in the Republic of Poland),
- ✓ decree of the Minister of Energy
(the government administration authority).

In Poland there are three mine rescue units.



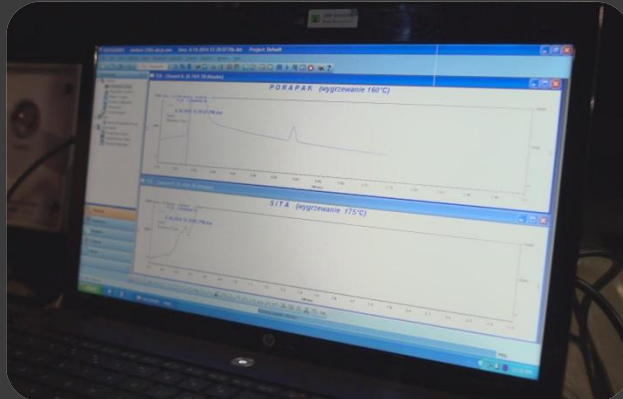
CENTRAL MINES RESCUE STATION

POLAND

✓ providing assistance to mining companies,



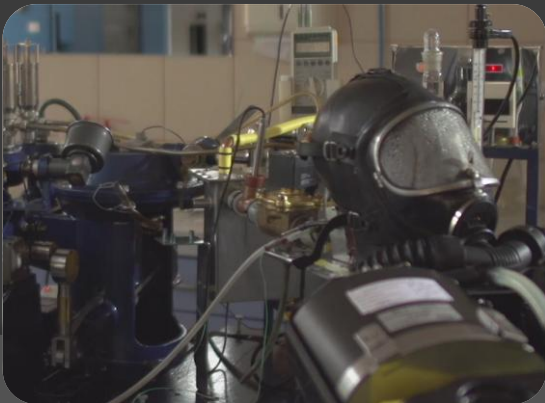
✓ maintenance of professional rescue groups,



✓ conducting rescue trainings and exercises,



✓ examination of rescue equipment,



✓ carrying out medical examinations for rescuers,



✓ performing specialized chemical analyzes.





CENTRAL MINES RESCUE STATION

POLAND

Each of mining plant should has a rescue team and mine rescue station.



State Mining Authority exercises supervision over rescue units.





CENTRAL MINES RESCUE STATION

POLAND

Each of mining plants has "Mining rescue plan"

This document specifies:

- ✓ organization of mine rescue services and necessary equipment,
- ✓ way of conduct a rescue operation.



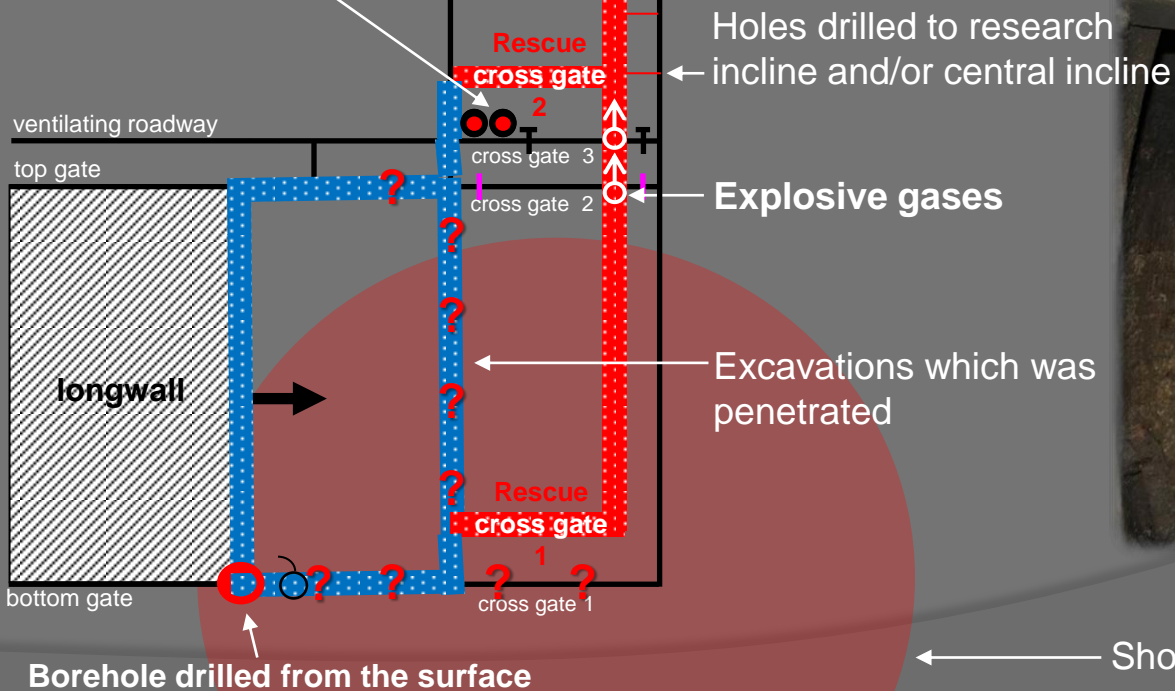
Manager of the rescue operation (director of mining plant)
manage the rescue operation and bears the sole responsibility.



Rescuers starts
to penetrate
mine excavations

No possibility of
moving forward

Miners were found here



Shock - 4.2 degree on Richter scale



Summary



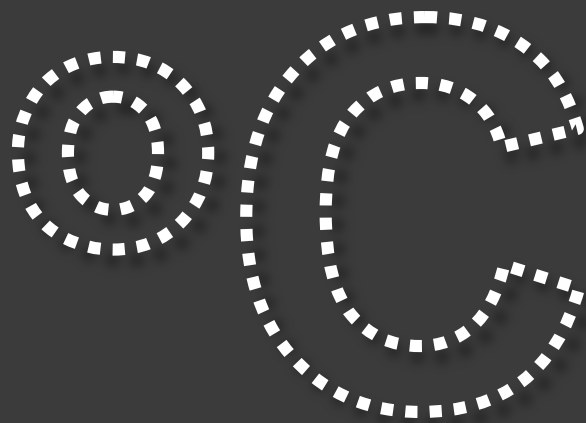
67

**rescue
operation days**



20

**rescue brigades
per day**

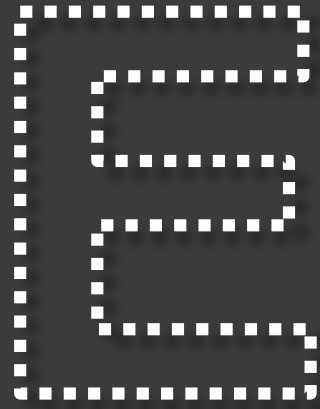


**extreme
temperature**



CH_4

**explosion
hazards**



shock risk



740 m

**drilled
excavations**

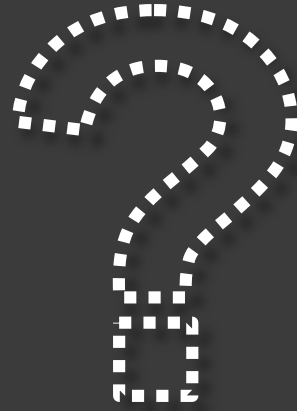


1050 m

**rescue
borehole**



was it worth it





**HOPE
DIES
LAST**



**CENTRAL MINES
RESCUE STATION**

CHORZOWSKA 25 STR.

41-902 BYTOM, POLAND

WWW.CSRG.BYTOM.PL